



# Estes Valley Fire Protection District Community Wildfire Protection Plan

## Results and Next Steps



START TIME	FACILITATOR(S)	DESCRIPTION
5:30	Corrina Marshall	Introductions
5:40	David Wolf	The Need for a CWPP
5:45	Kenzie Hartt	CWPP Overview
5:50	Meg Matonis	CWPP Analyses & Prioritization
6:00	Corrina Marshall	Implementation Recommendations
6:10	Project Partners	Success Stories
6:25	Project Partners	Available Programs and Funding (Time for Questions)
6:55	TEA and Project Partners	Q & A
7:25	Corrina Marshall	Next Steps and Closing



# Meeting Goals

Discuss community fire risk and priority actions

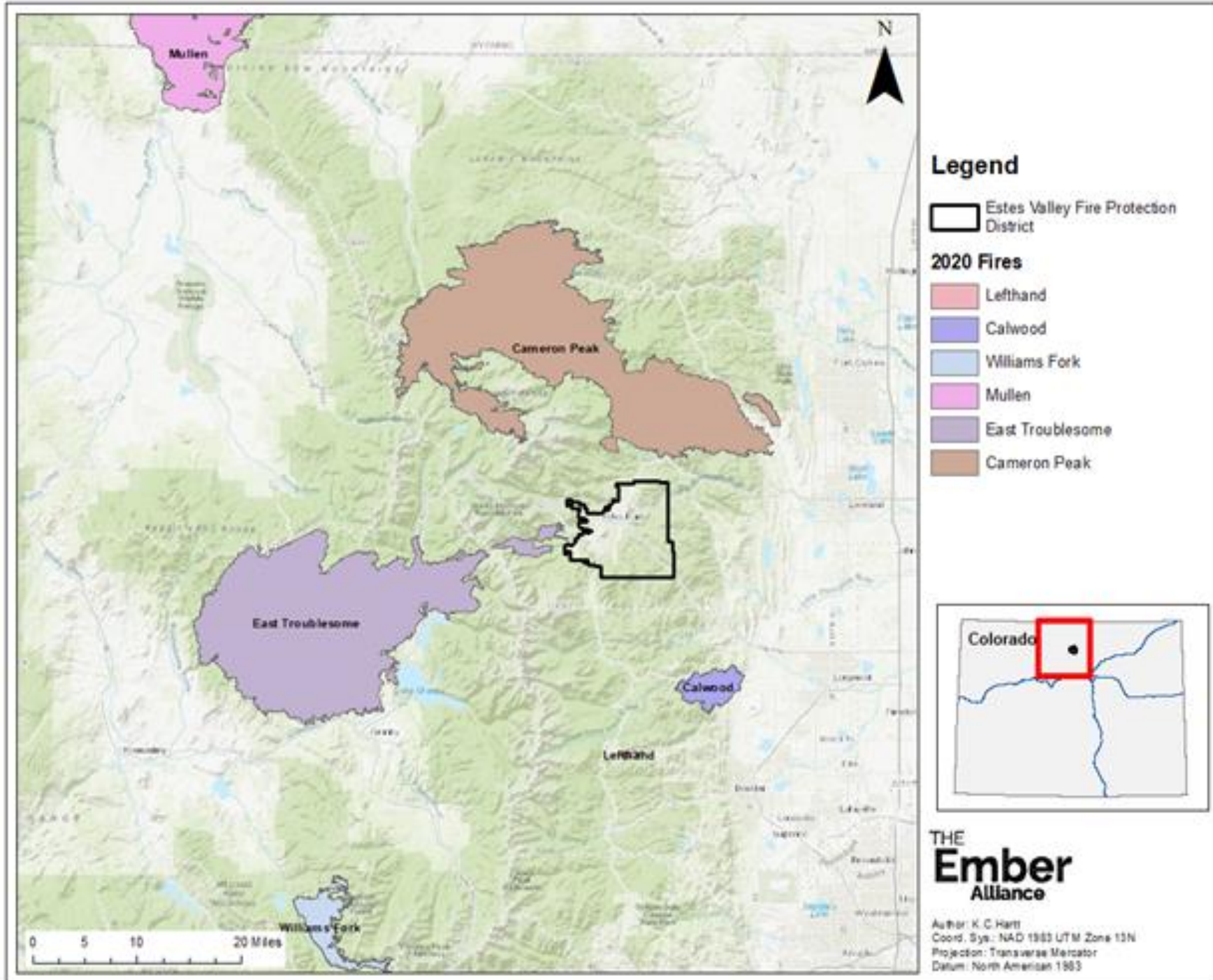
Review actions community and residents can take

Find resources for your next steps



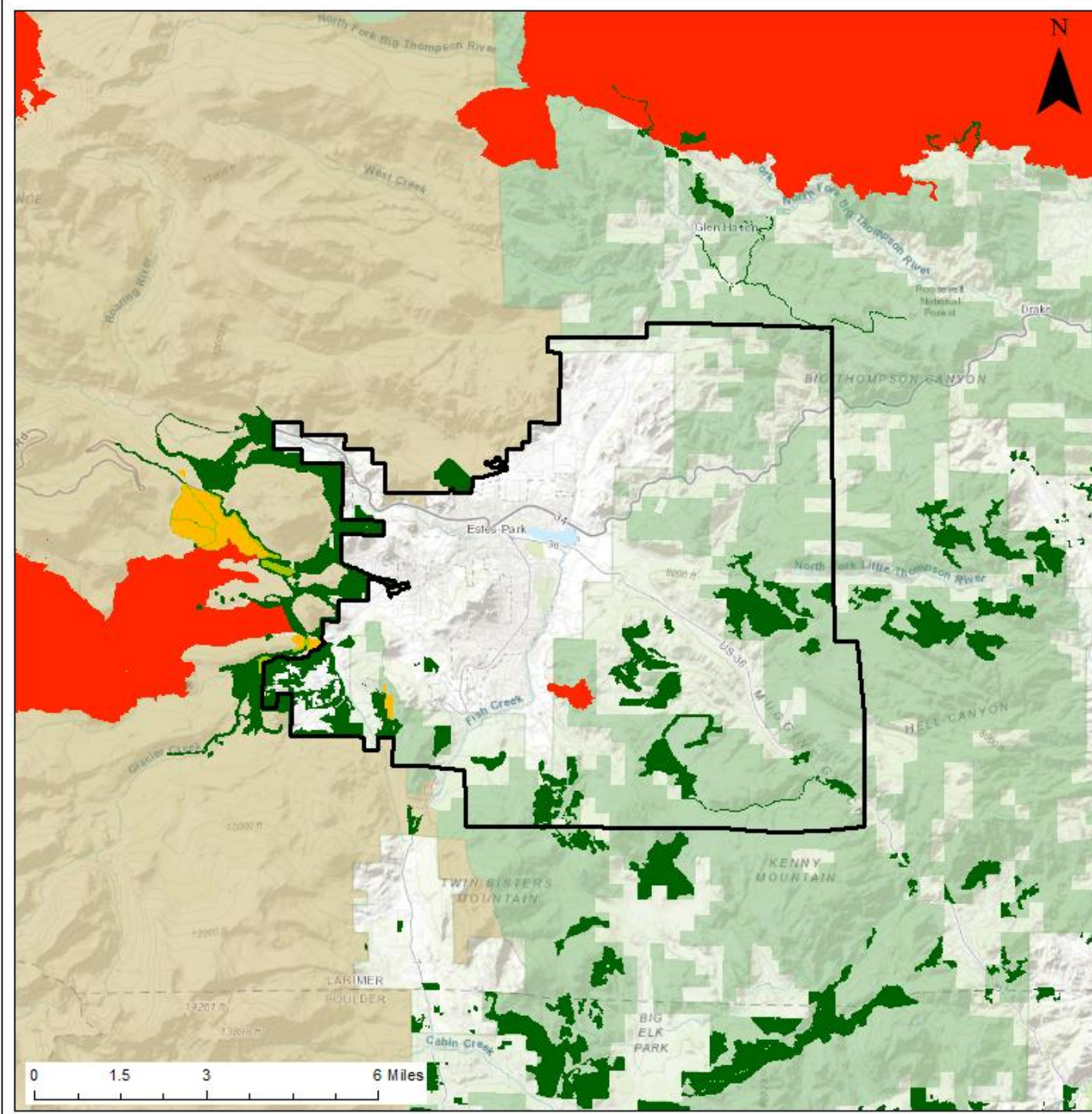


# The Need for a CWPP





# The Need for a CWPP





## Legend

 Estes Valley Fire Protection District

### Fuel Treatment Type

-  Thinning
-  Thinning and Rx fire
-  Rx fire
-  Wildfire

### Federal Land

-  Rocky Mountain National Park
-  Arapaho-Roosevelt National Forest



THE  
**Ember**  
Alliance

Coord. Sys.: NAD 1983 UTM Zone 13N  
Projection: Transverse Mercator  
Datum: North American 1983

# Fire Adapted Community

A community consisting of informed and prepared citizens collaboratively planning and taking action to safely coexist with wildland fire.

*(National Wildfire Coordinating Group definition)*





# Community Wildfire Protection Plan

Community Engagement

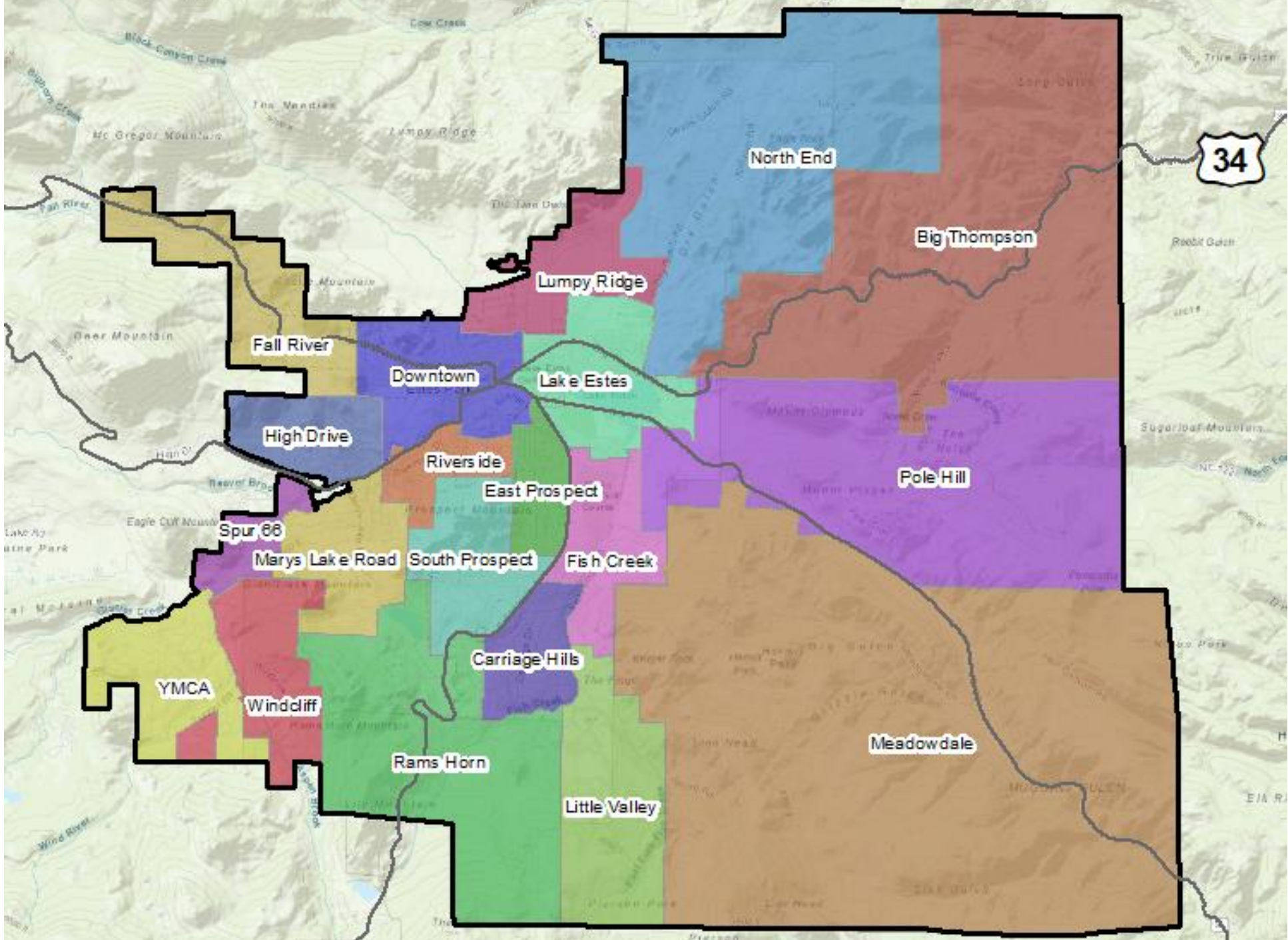
Wildfire Risk Analysis

Project Prioritization

On-the-Ground Action

# Plan Units

- Big Thompson
- Carriage Hills
- Downtown
- East Prospect
- Fall River
- Fish Creek
- High Drive
- Lake Estes
- Little Valley
- Lumpy Ridge
- Marys Lake Road
- Meadowdale
- North End
- Pole Hill
- Rams Horn
- Riverside
- South Prospect
- Spur 66
- Windcliff
- YMCA







## Diverse Forest and Fuel Conditions

- Mixed conifer forest
- Ponderosa woodlands
- Grassland



# Fire Behavior Assessment



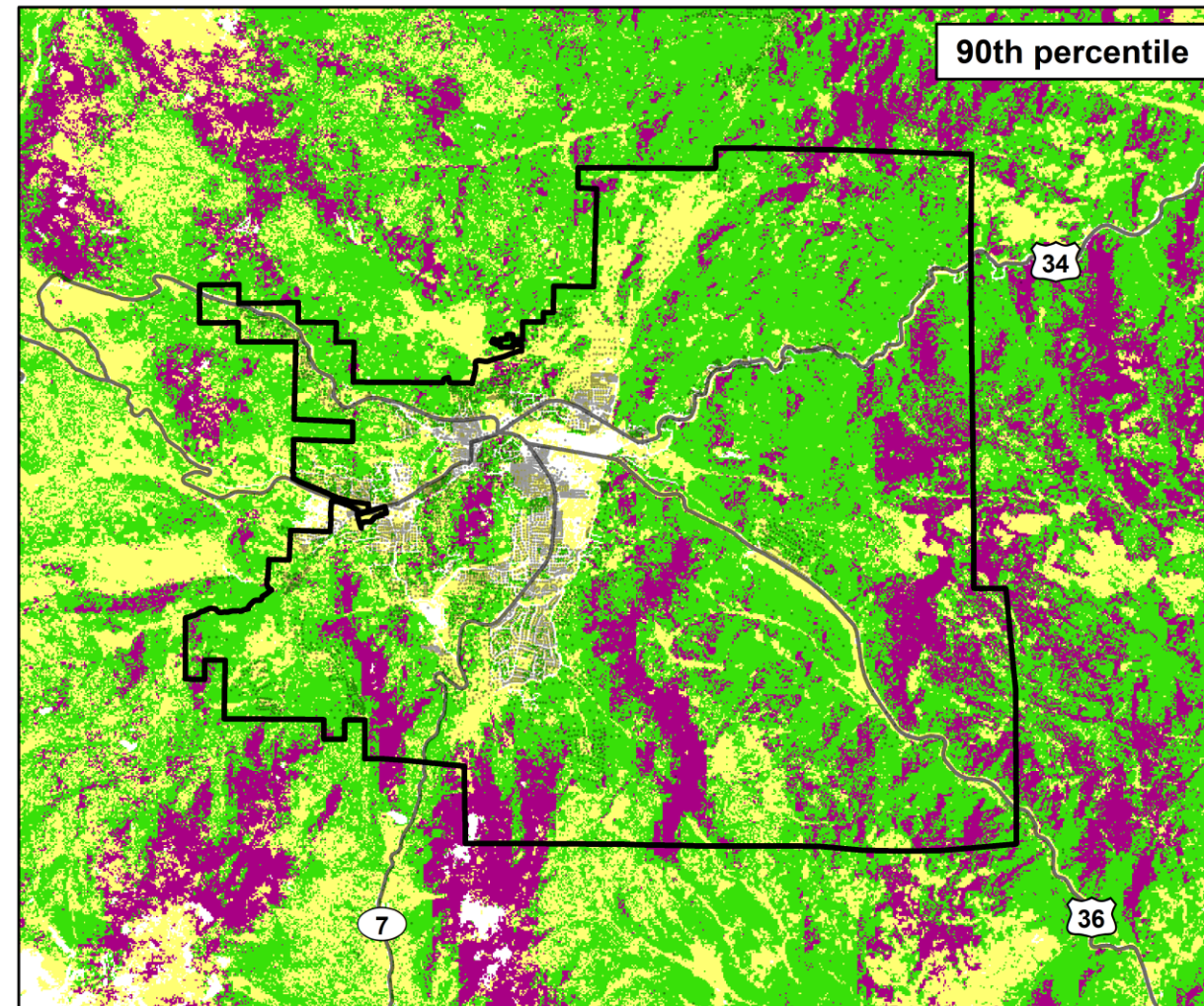
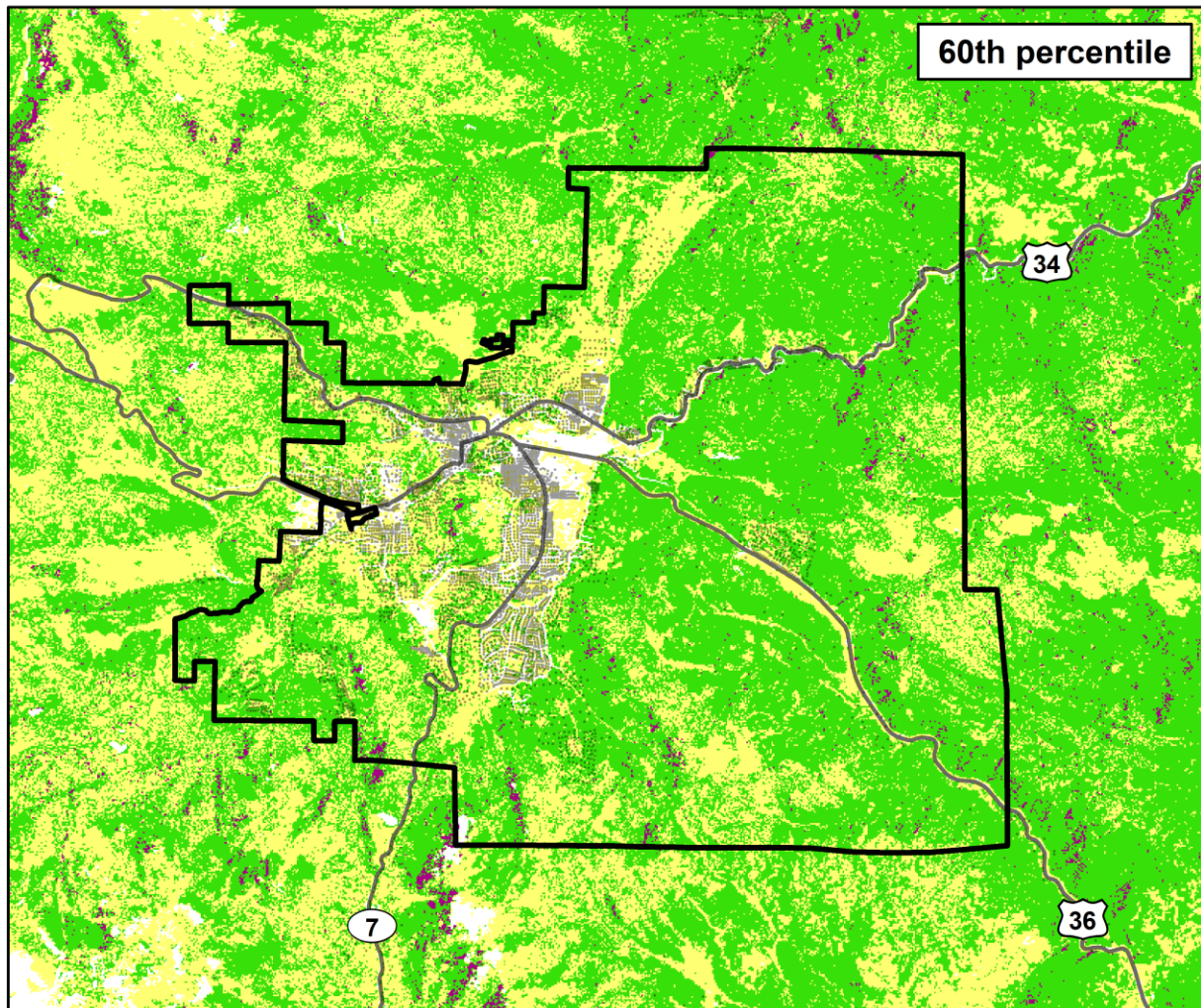
**Active crown fire**  
Mainly aerial fuels  
involved in fire spread  
across landscape



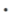


**Passive crown fire**  
Patches of stand torching  
but fire spread mainly  
through surface fuels







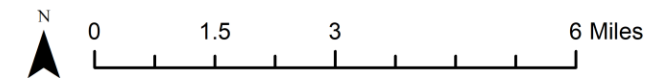
**Surface fire**  
Mainly surface fuels  
involved in fire  
spread



-  Estes Valley FPD
-  Major roads
-  Addresses

**Legend**

- Crown fire activity**
-  Unburnable / not modeled
  -  Surface fire
  -  Passive crown fire
  -  Active crown fire





# Prioritization

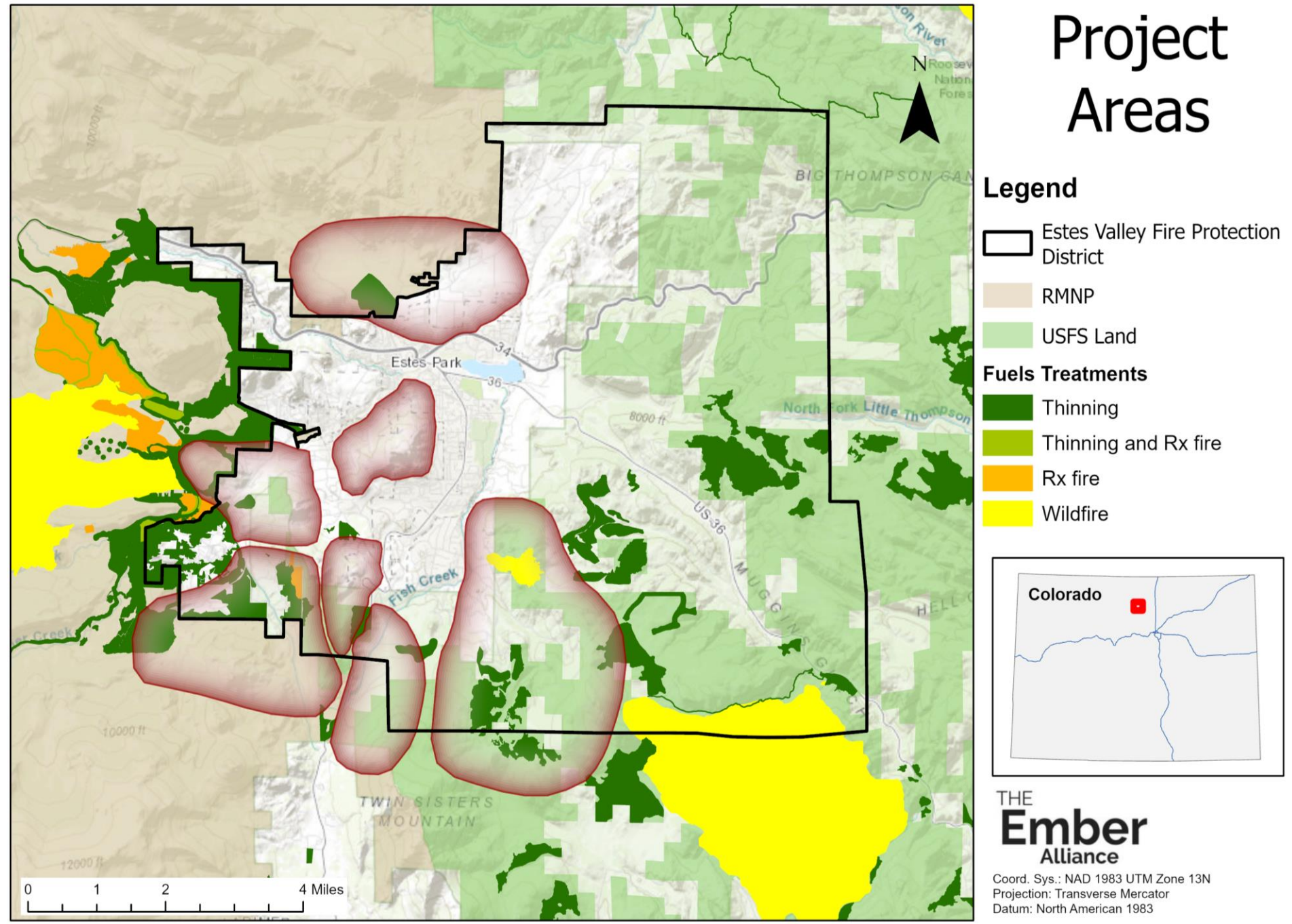
Priority Project Areas


Highest-risk Plan Units

# Project Areas

Priority locations for agencies and land managers to direct resources in the next 5 years.

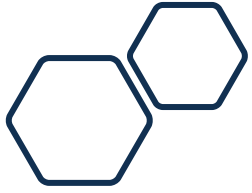
Treatments here will benefit the whole community.





What if I  
don't live in a  
project area?

- All project locations in the valley are important
- Everyone in the valley has a role to play in mitigating wildfire risk
- Follow guidance from the recommendations for your plan unit



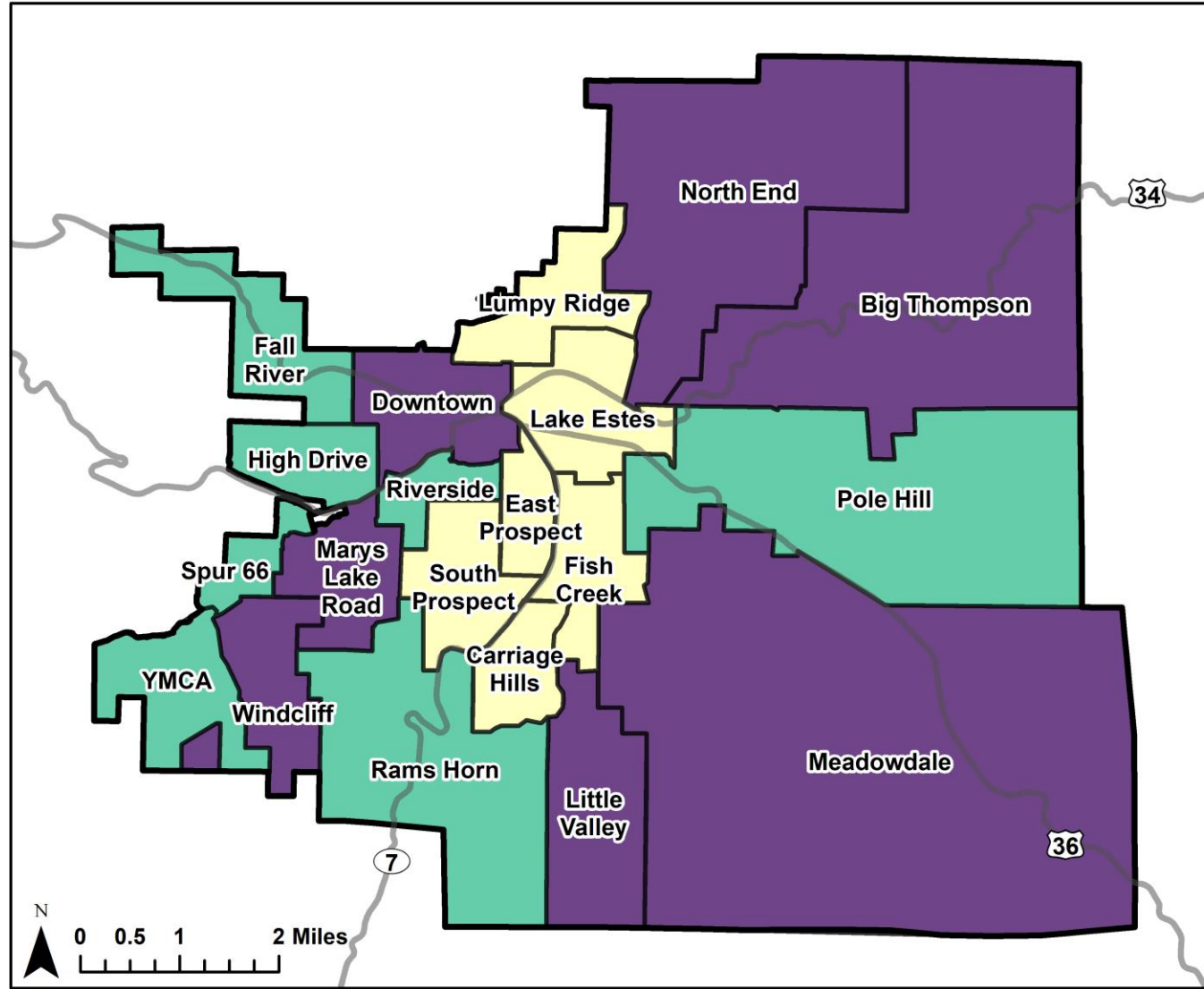
## Prioritization: Plan Units Relative Risk to Structures

- **Fire Risk**
- **Fire Suppression (e.g., limited hydrant availability and engine access)**
- **Evacuation Hazards**
- **Home Ignition Zone Hazards**

Our assessment was based on predictions of fire behavior, radiant heat and spotting potential, roadway survivability, and evacuation time, as well as an on-the-ground assessment of each planning unit.



# Overall Relative Risk within Estes Valley Fire Protection District

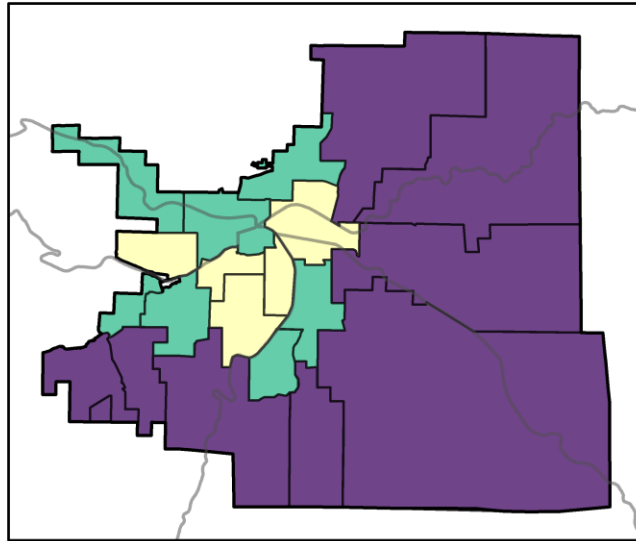


Relative Risk Rating by CWPP Plan Unit

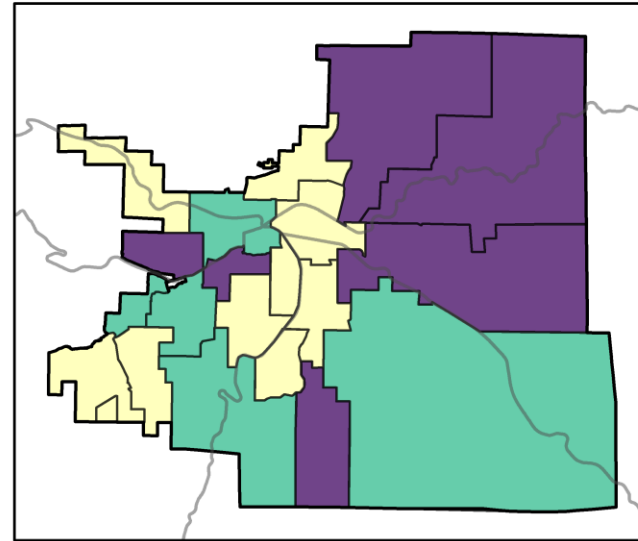
Extreme High Moderate



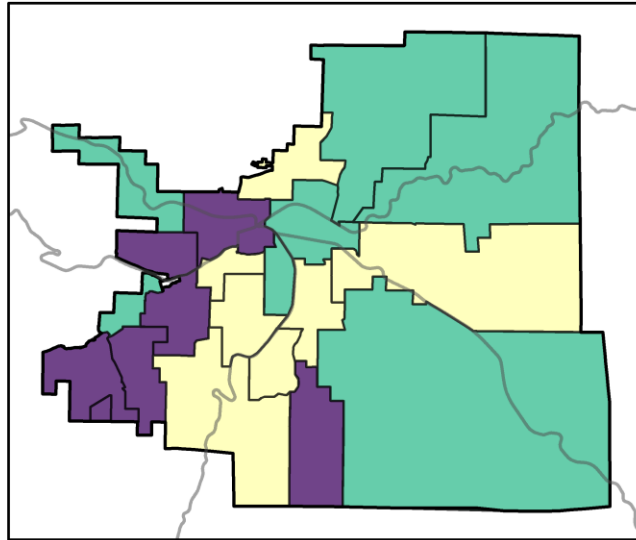
**Fire Risk**



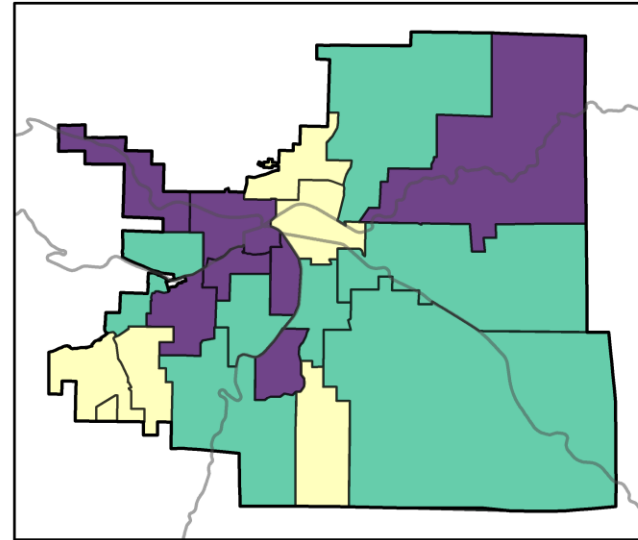
**Suppression Challenges**



**Evacuation Hazards**



**Home Ignition Zone Hazards**



**Relative Risk Rating by CWPP Plan Unit**





# Shared Implementation Responsibility

**Individual:** Home Ignition Zone and Defensible Space

**Communities:** Coordinated Mitigation by Plan Unit

**District:** Strategic landscape and roadway fuel treatments in priority areas

Fire-suppressed forest



Ecologically managed forest





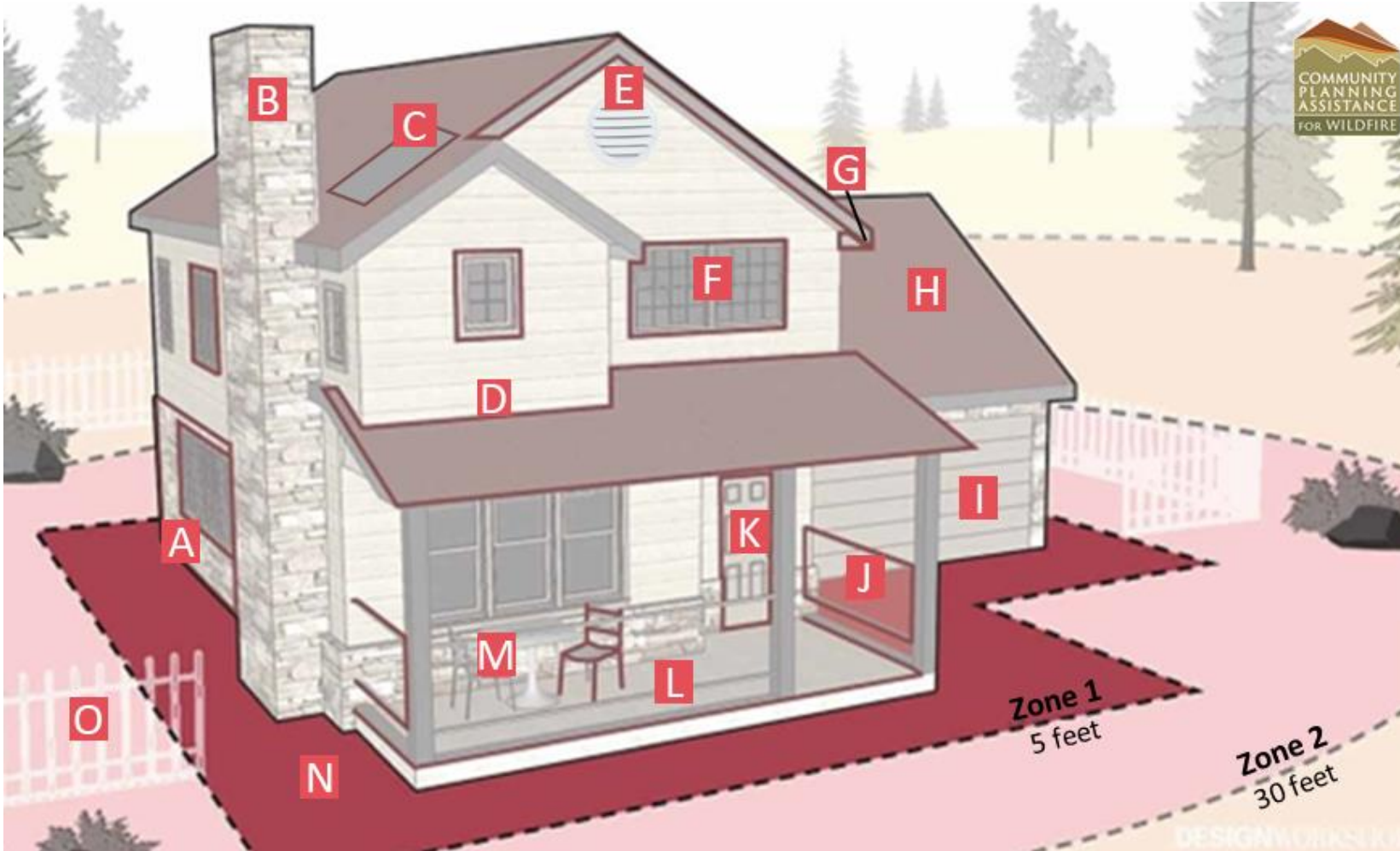
Illustration: Bonnie Palmatory, Colorado State University

# Home Ignition Zone



*See the CWPP for practices to mitigate your home ignition zone*

# Home Ignition Zone

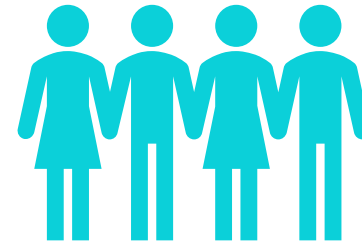


## Example home hardening practices:

- A.** Use noncombustible or ignition resistant siding and trim
- G.** Clear debris from roof and gutters regularly. Install noncombustible gutters, gutter covers, and downspouts.
- M.** Use noncombustible patio furniture.
- N.** Establish and maintain a 5-foot noncombustible buffer around the home.
- O.** Replace wooden fences with noncombustible materials and keep at least 8 feet away from the home.

*See the CWPP for home hardening tips associated with each letter in the figure*

# Community Organization



Recommendations for  
Plan Units

Neighborhood  
Champions

# Success Stories

Learn about how local residents  
utilized resources to complete  
wildfire mitigation



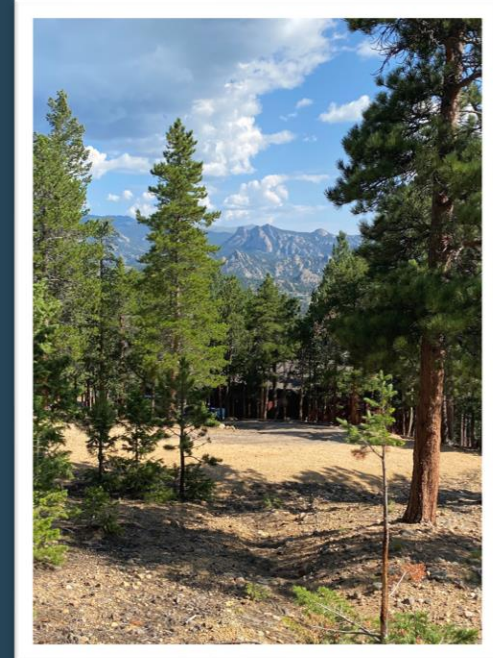
# Estes Valley Watershed Coalition



Grassroots organization started in  
2015

Primary goal was coordinating  
flood recovery projects

- Coordinating 8 projects and initiatives
- Projects support our mission to protect the water, forests, and wildlife





# Marys Lake Project



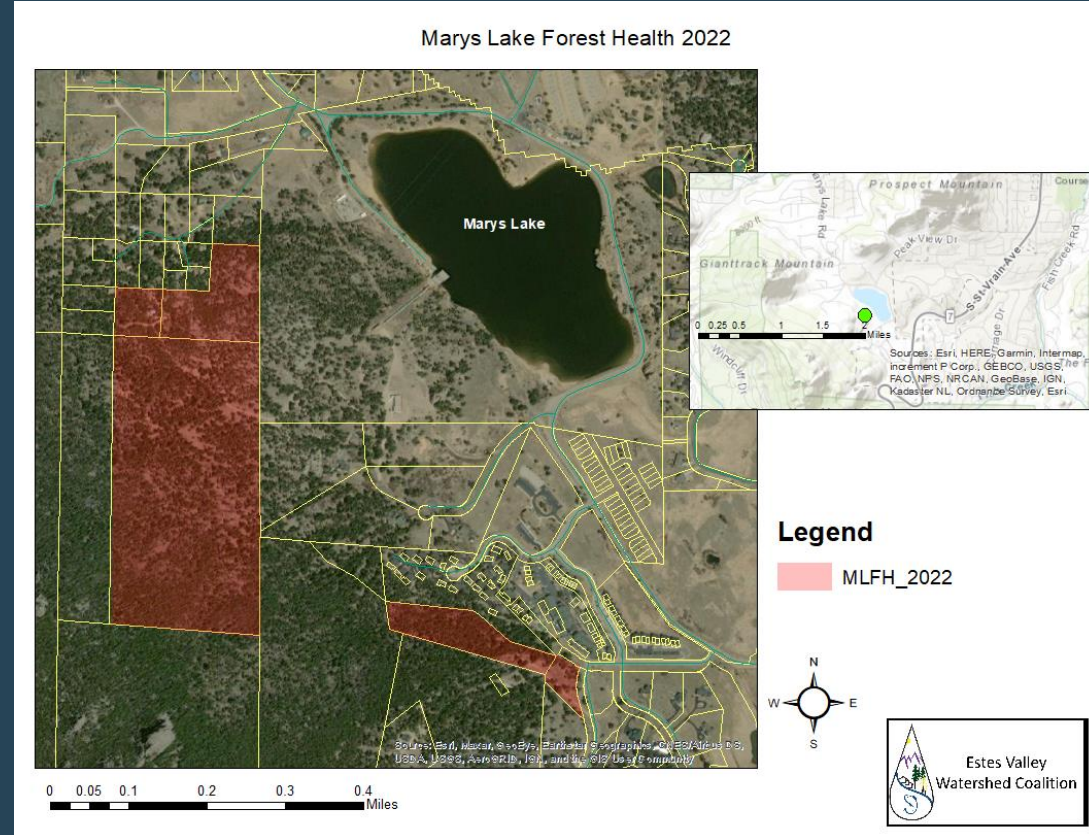
## Supports the CWPP



- Help coordinate mitigation on private lands
- Reduce wildfire impacts to the water supply and Estes community
- Community engagement and conversations

# Partners

- Colorado State Forest Service
- Town of Estes Park
- Estes Valley Fire Protection District
- Northern Water
- Village Thrift Shop
- Larimer County OEM



# Contact Information



Wilynn Formeller

970-290-1829

[wilynn.formeller@evwatershed.org](mailto:wilynn.formeller@evwatershed.org)

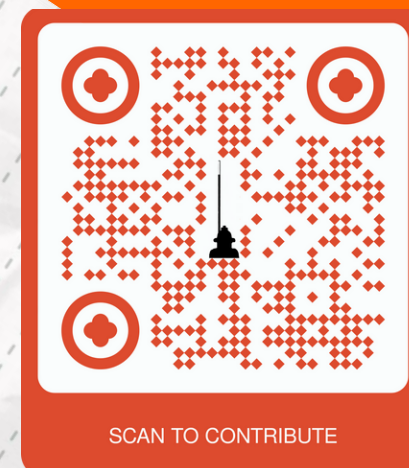
[www.evwatershed.org](http://www.evwatershed.org)

# Estes Park Newcomers Fire Mitigation Project

IN ALLIANCE WITH THE ESTES VALLEY FIRE  
PROTECTION DISTRICT

**GOAL: 700 Fire Hydrant Markers**

For \$30  
you can help put a marker  
on a fire hydrant in the  
Estes Valley so it can be  
easily found if covered by  
plowed snow or tall  
vegetation





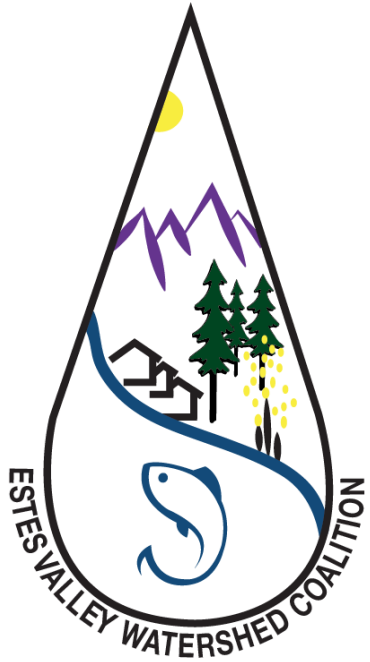
# Takeaways

Areas of High-Risk present in this Fire Protection District

Shared Implementation Responsibility

Estes Valley Fire and agency partners work at landscape scale

Residents can do their part with the Home Ignition Zone



Available Programs, Funding & Resources

Do you have any questions about the CWPP process, risk analysis, and prioritization?





## Next Steps for CWPP

Receive community feedback on CWPP



Finalize CWPP Project on June 30



A scenic mountain landscape with snow-capped peaks, evergreen forests, and a valley. The text "Thank you!" is overlaid in the center.

Thank you!